

Light efficiency:

80 Lumen/Watt

Light quality:

CRI: 81.0

Color temperature:

3091 K

Output: 3239 lm

Peak: 6087 cd

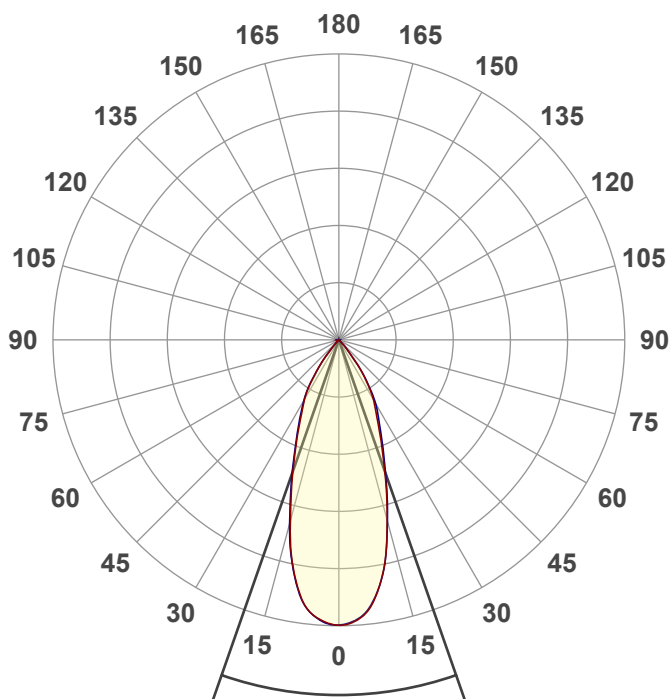
Power: 40.7 W

PF: 0.98



NU3-RD-SW-40LM-30K-80-40D-NL-WH-WH

Date and time:
11/9/2020 2:29:12 PM



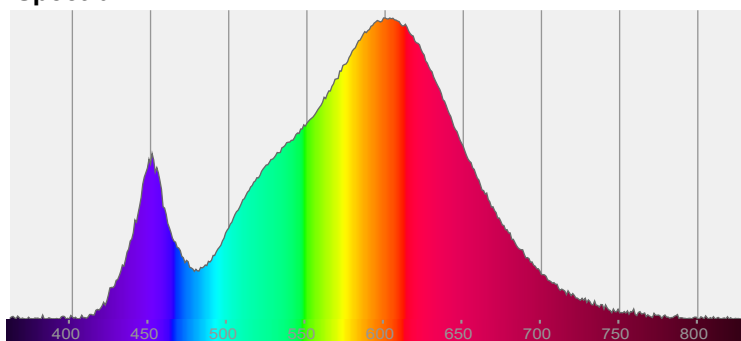
Beam angle

38.6°

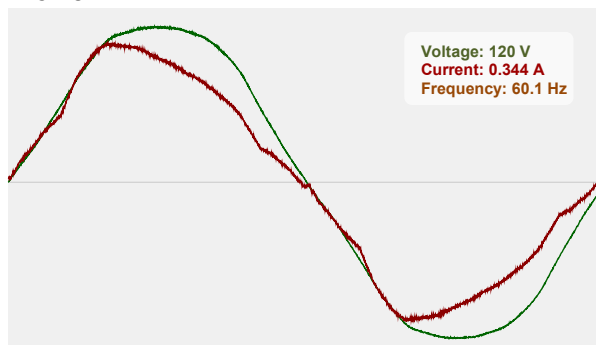


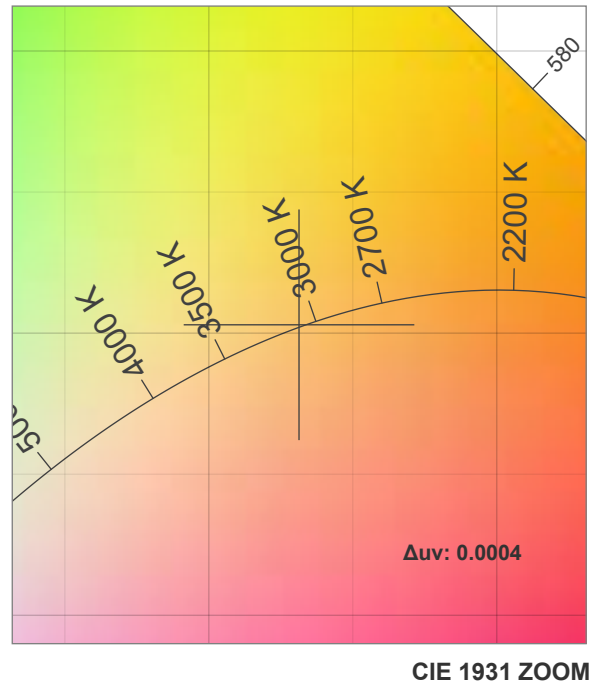
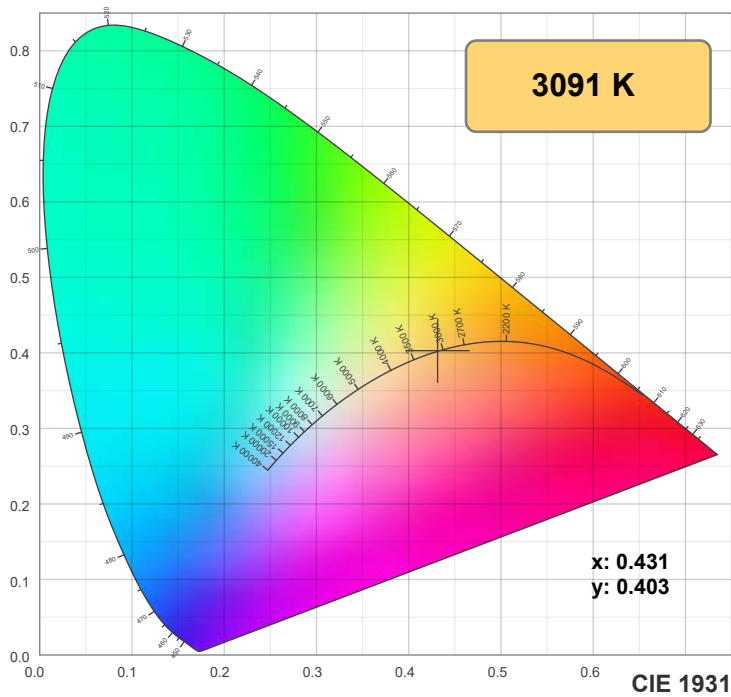
CIE 1931
x: 0.431
y: 0.403

Spectra

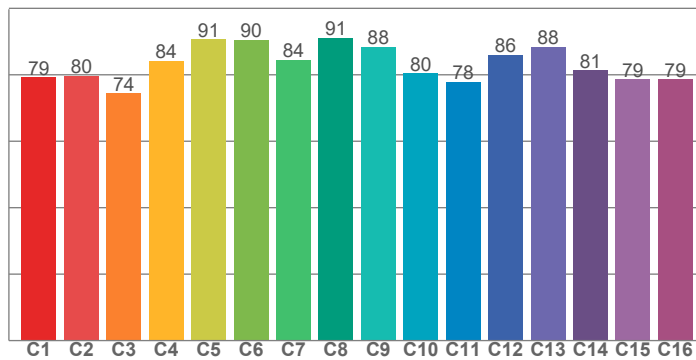


Power

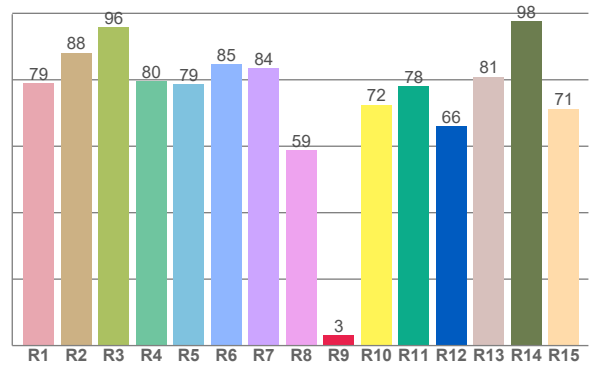




TM30: 83.1



CRI: 81.0 (R1-R8)



CRI R values, only R1-R8 are used to calculate final CRI value

R1	R2	R3	R4	R5	R6	R7	R8	R9	R10	R11	R12	R13	R14	R15
79.0	88.2	95.8	79.6	78.6	84.7	83.5	58.8	3.0	72.5	78.0	66.0	80.9	97.6	71.3

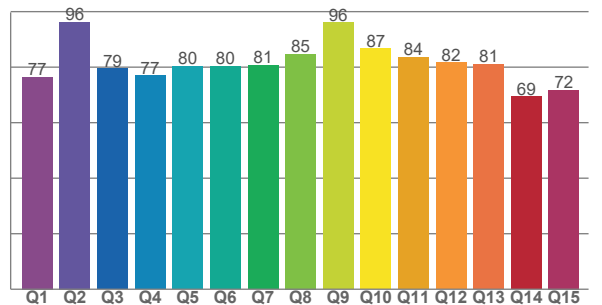
TM30 C values, 16 binned values out of total of 99 C values

C1	C2	C3	C4	C5	C6	C7	C8	C9	C10	C11	C12	C13	C14	C15	C16
79.2	79.6	74.4	84.2	90.6	90.4	84.4	91.1	88.4	80.4	77.9	86.0	88.4	81.4	78.6	78.7

CQS Q values

Q1	Q2	Q3	Q4	Q5	Q6	Q7	Q8	Q9	Q10	Q11	Q12	Q13	Q14	Q15
76.5	96.3	79.5	76.9	80.3	80.3	80.7	84.8	96.1	86.7	83.5	81.6	81.0	69.4	71.7

CQS: 80.2



Color parameters

Color temperature	Color rendering index	Red component	Color fidelity	Color gamut	Color quality scale	Color coordinate cie 1931	Color coordinate cie 1931	Color coordinate	Color coordinate	Color deviation from black body
CCT	CRI	CRI R9	TM30 Rf	TM30 Rg	CQS	x	y	u	v	Δuv
3091 K	81.0	3.0	83.1	96.9	80.2	0.431	0.403	0.247	0.347	0.0004

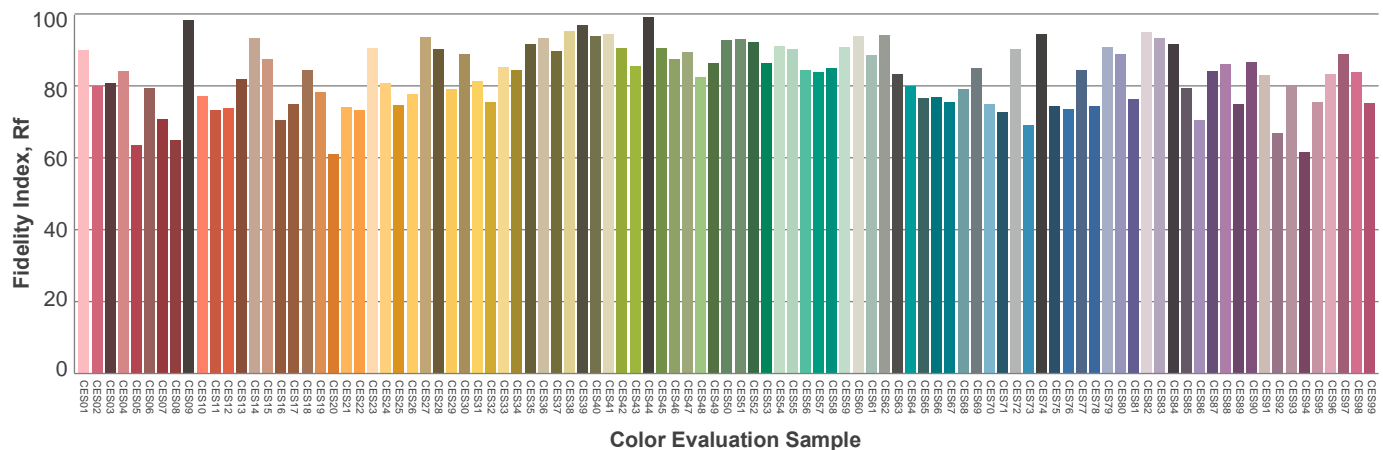
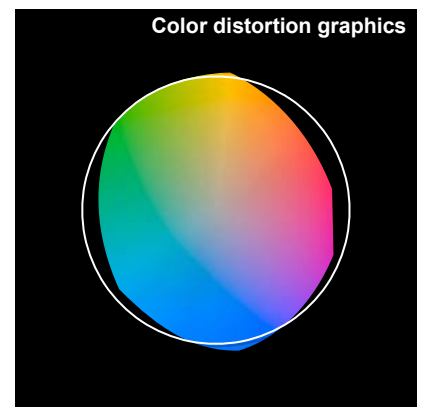
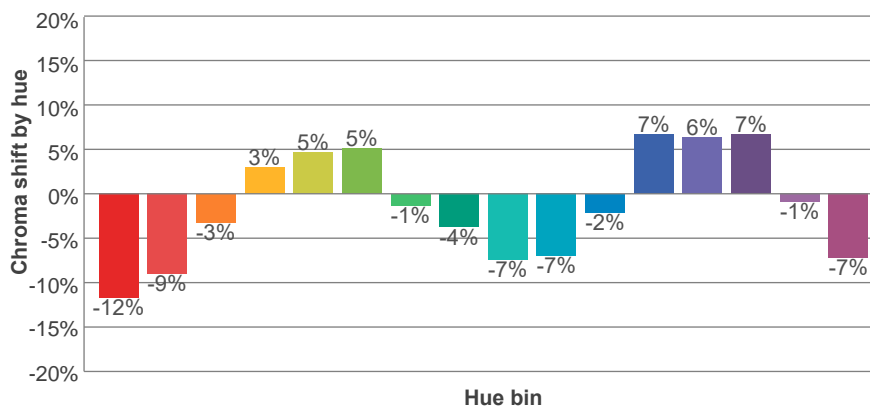
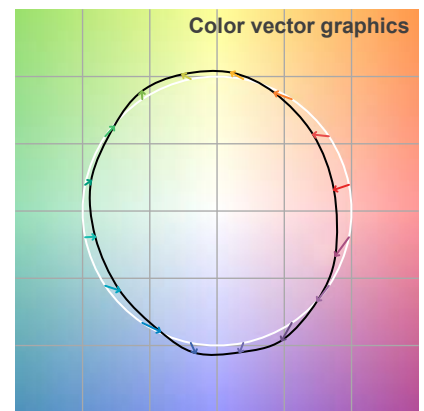
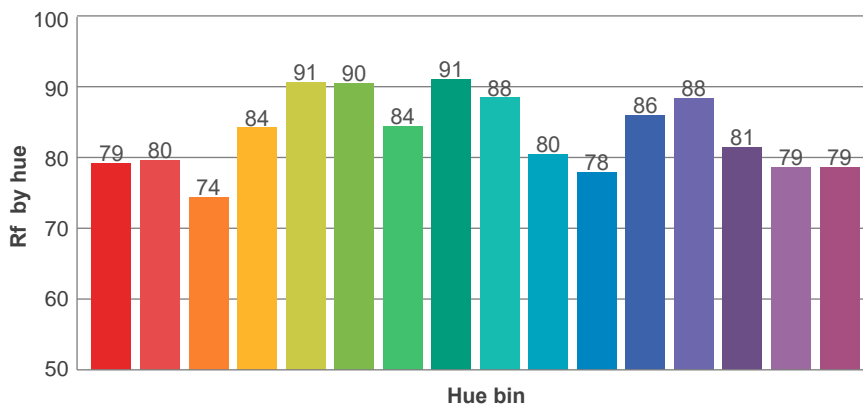
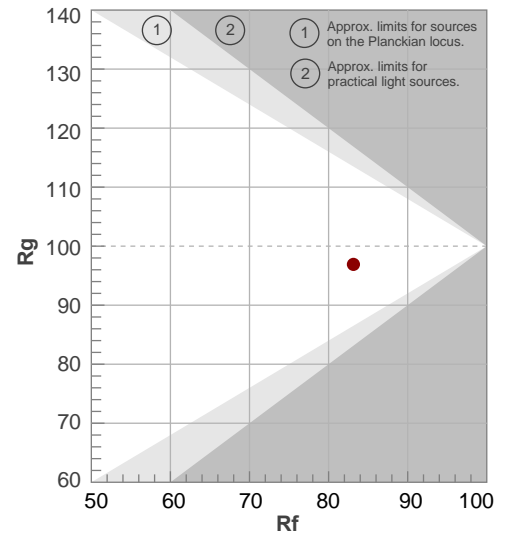
Rf 83.1

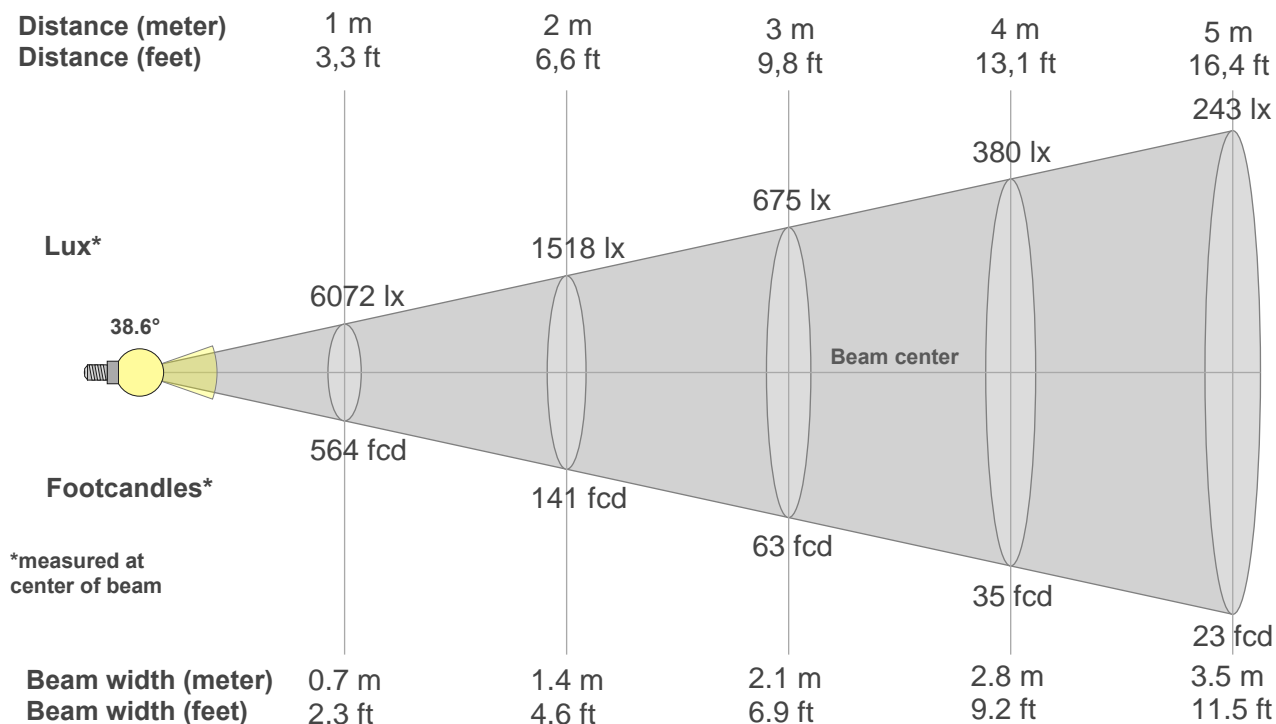
Fidelity index Rf

Rg 96.9

Gamut index Rg

Hue Bin	R _f	Graphic shifts (%)	
		Chroma	Hue
1	79	-12%	-1%
2	80	-9%	8%
3	74	-3%	13%
4	84	3%	10%
5	91	5%	5%
6	90	5%	-3%
7	84	-1%	-10%
8	91	-4%	-4%
9	88	-7%	1%
10	80	-7%	9%
11	78	-2%	15%
12	86	7%	5%
13	88	6%	-4%
14	81	7%	-13%
15	79	-1%	-14%
16	79	-7%	-16%





Beam intensities from 1-20m

1m	2m	3m	4m	5m	6m	7m	8m	9m	10m	11m	12m	13m	14m	15m	16m	17m	18m	19m	20m
3.3ft	6.6ft	9.8ft	13.1ft	16.4ft	19.7ft	23ft	26.2ft	29.5ft	32.8ft	36.1ft	39.4ft	42.7ft	45.9ft	49.2ft	52.5ft	55.8ft	59.1ft	62.3ft	65.6ft
6072lx	1518lx	675lx	380lx	243lx	169lx	124lx	95lx	75lx	61lx	50lx	42lx	36lx	31lx	27lx	24lx	21lx	19lx	17lx	15lx
564.1fcd	141fcd	62.7fcd	35.3fcd	22.6fcd	15.7fcd	11.5fcd	8.8fcd	7fcd	5.6fcd	4.7fcd	3.9fcd	3.3fcd	2.9fcd	2.5fcd	2.2fcd	2fcd	1.7fcd	1.6fcd	1.4fcd

Intensities in 0° c-plane

0°	2°	4°	6°	8°	10°	12°	14°	16°	18°	20°	22°	24°	26°	28°	30°	32°	34°	36°	38°
6072	6087	5951	5810	5544	5178	4792	4274	3755	3296	2861	2466	2171	1876	1670	1476	1266	1033	800	569
100%	100%	98%	96%	91%	85%	79%	70%	62%	54%	47%	41%	36%	31%	27%	24%	21%	17%	13%	9%

Intensities in 90° c-plane

0°	2°	4°	6°	8°	10°	12°	14°	16°	18°	20°	22°	24°	26°	28°	30°	32°	34°	36°	38°
6072	6053	5933	5813	5516	5186	4784	4282	3779	3345	2910	2555	2258	1976	1772	1568	1324	1065	807	554
100%	100%	98%	96%	91%	85%	79%	71%	62%	55%	48%	42%	37%	33%	29%	26%	22%	18%	13%	9%

Intensities in 180° c-plane

0°	2°	4°	6°	8°	10°	12°	14°	16°	18°	20°	22°	24°	26°	28°	30°	32°	34°	36°	38°
6072	6057	5961	5812	5615	5213	4811	4307	3772	3281	2872	2463	2171	1890	1653	1463	1267	1015	763	538
100%	100%	98%	96%	92%	86%	79%	71%	62%	54%	47%	41%	36%	31%	27%	24%	21%	17%	13%	9%

Intensities in 270° c-plane

0°	2°	4°	6°	8°	10°	12°	14°	16°	18°	20°	22°	24°	26°	28°	30°	32°	34°	36°	38°
6072	6056	5987	5809	5632	5238	4820	4353	3833	3320	2921	2521	2211	1950	1700	1490	1280	1024	757	515
100%	100%	99%	96%	93%	86%	79%	72%	63%	55%	48%	42%	36%	32%	28%	25%	21%	17%	12%	8%

Beam angle 50%	Field angle 10%	Cutoff angle 2,5%	Intensity ratio in 120° cone	Intensity ratio in 90° cone
38.6°	74.8°	84.5°	99.5%	99.1%